

Education Recovery Tutoring Initiative

ERTI

Info Pack

WHAT IS ERTI?

The Education Recovery Tutoring Initiative (ERTI) aims to address the learning loss of 600 students from six PPR communities through a year-long tutoring.

Volunteers can commit for a minimum of 10-weeks up to 40 weeks tutoring sessions.

The role is to tutor students in either mathematics, English or Bahasa Melayu.



BACKGROUND OF PROJEK PERUMAHAN RAKYAT (PPR)



Low cost flats provided by the government for B40 families (income <RM 3,000)



Every flat unit <750 sq ft, 5-15 family members, many are 3 generations living in the same space / single parent households



Mostly Malay speaking families



Some of the upper secondary school students have dropped out from school. There are also cases of glue sniffing and teenage pregnancies/ baby dumping



Many students experienced learning loss during MCO due to lack of devices and internet connection

Organised by



Supported by





THE COMMUNITY INVOLVED, 2024

No.	Community	Start and End Date
1	<u>PPR Lembah Subang, Selangor</u>	12th October - 21st October 2024
2	<u>PA Sri Selangor, W.P. Kuala Lumpur</u>	
3	<u>PPR Raya Permai, Selangor</u>	19th October 2024 - 28th October 2024
4	<u>PPR Seri Alam, W.P Kuala Lumpur</u>	

Volunteering session would occur **every SATURDAY**



PROGRAMME BACKGROUND

The Issue

Malaysia's urban low-income families comprise around 10% of the country's population. The COVID-19 pandemic and Movement Control Order (MCO) had further worsened the B40 children's access to education for more than 2 years.

Why?

- lack of appropriate devices
- family financial struggles
- parent's inability to supervise their children's academic growth

Consequence

Children did not learn effectively thus widening the learning gap again among the urban B40 children in Malaysia.

What can we do?

Teach For Malaysia is organising a 40-week tutoring program sponsored by Yayasan Hasanah

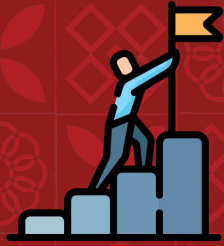
Who will you tutor?

- Students ages 7-15 (Primary 1 - Form 3)

What will be taught?

- English, Malay and Mathematics

PROGRAMME OBJECTIVES



Programme Objective & Structure

Understand the intended objectives and how the programme will be carried out



To empower students and increase their motivation for learning through interactive weekly tutoring sessions.



Increase the academic performance of students impacted by the learning loss in B40 communities in Klang Valley.



Training and equipping the broader community to engage and support the students' journey in order to have a sustainable program.

PROGRAMME MODEL



Tutoring Classes

Students to receive weekly tutoring classes on Saturdays for English, Bahasa Malaysia and Mathematics.



Buddy Tutoring

If you can't commit to 10 weeks of tutoring, no worries. Split it with a buddy and each of you take 5 weeks each.
Let us know!



Community Involvement

Supported by the community working together striving towards allowing all children to access quality education.

PROGRAMME REQUIREMENTS

Be a Catalyst for Change!



This is your chance to help 600 students from six PPR communities overcome learning loss and unlock their full potential. you'll play a vital role in shaping their futures.

REQUIREMENTS



Malaysian &
18 years old



SPM/
Diploma/
Bachelor

10

weeks &
above
commitment



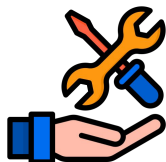
Able to
speak
Malay and
English

PROGRAMME STRUCTURE



Timeline & Volunteer Responsibility

Know how you as a volunteer come in!



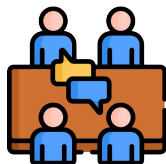
Attend a volunteer onboarding session

- Understanding the community and programme
- Learn and understand child protection policy
- Programme resources and implementation
- Programme assessment and evaluation tools
- Feedback and support



Tutoring session with TFM Officers

- **Attend and tutor students** in the PPR communities.
- Saturdays, half day either morning or afternoon session.



Weekly/Bi-Weekly Check-ins with Volunteer Leads

Attend a weekly/bi-weekly check-ins with your volunteer leads to track your progress and for support. Any feedback can be given during check-ins. There will be a monthly check-in with TFM officers.

How Does a Session Look Like?

During session

1. Conduct 15-min temperature check

2. Conduct 75-min tutoring session including breaks

3. Conduct 15-min formative assessment

4. Debrief

Session 1	Session 2	Agenda	
8am - 8.30am	11.00am - 11.30am	Arrival & set up	All
8.30am - 8.45am	11.30am - 11.45am	Temperature check	VTs
8.45am - 9.30am	11.45am - 12.30pm	Tutoring (VLs observe and mentor VTs)	VTs & VLs
9.30am - 9.45am	12.30pm - 12.45pm	Break	All
9.45am - 10.30am	12.45am - 1.30pm	Tutoring & Formative assessments	VTs & VLs
10.30am - 10.40am	1.30pm - 1.40pm	- VTs to fill up student tracking sheet - VLs to fill up VT tracking sheet	VTs & VLs
10.40am-11am	1.40pm - 2pm	Debrief	VTs & VLs

PREVIOUS PROGRAMMES DONE IN THE COMMUNITIES



Supported by

YAYASAN
HASANAH
A foundation of Khazanah Nasional



Organized by



We Are Looking For

Volunteer Tutors

We want people who believes education can change lives!



SIGN UP NOW

For more info
www.teachformalaysia.org/tutoring-programme



Thank You